

Deckmate™ 300

Roofing Blanket Insulation Spacer

Product Description and Typical Applications

Deckmate™ 300 Thermal Insulation Spacer is an extruded Dow Styrofoam™ strip with a compressive strength of 300kpa. The high compressive strength of 300kpa is required for the product to maintain its structural integrity and cope with foot traffic on the roof.

Deckmate 300 Thermal Insulation Spacers are designed specifically to achieve the recovered thickness of the building blanket between purlins and thereby achieve the full potential thermal performance. Commercial metal roofs require the use of safety wire over purlins, therefore to achieve recovered thickness of the insulation blanket between the metal deck roof and safety wire, an insulation spacer is necessary over the insulation blanket along the purlin line. The thickness of the insulation spacer required is determined by the nominal thickness of the blanket. Typically, 25mm Deckmate is recommended with 55mm blanket and 50mm Deckmate with 75mm blanket.

Physical Characteristics

Appearance: Blue rigid foam

Length options: 700, 1250, 2500 mm

Thickness (mm)	Width (mm)	Density (kg/m³)	Material R-value (m²K/W)
25	75	32	0.89
40	75	32	1.43
50	75	32	1.79
75	75	32	2.67
100	75	32	3.57

Tolerances +/- 1 - 2mm

Health and Safety

Deckmate 300 is not classified as hazardous according to criteria of NOHSC.

Moisture Resistance

Deckmate 300 has a closed cell structure with a water absorption rate of less than 0.3 %.

AS1530.3 Early Fire Hazard Properties of Materials

Deckmate 300 exhibits the following characteristics when test in accordance with AS1530 Part 3. Although Deckmate 300 contains a halogenated flame retardant additive system to inhibit accidental ignition from small fire sources, it is combustible.

Softening Point: > 75°C

Flash Point: 346°C

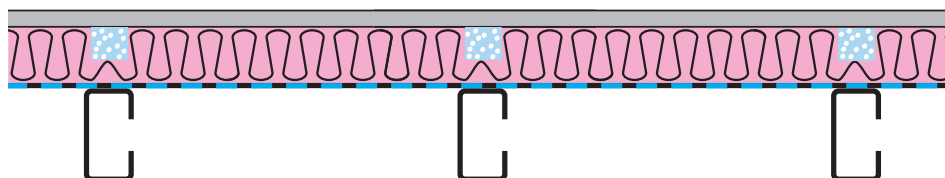
Ignitability Index	9
Spread of Flame Index	0
Heat Evolved Index	1
Smoke Developed Index	4

Specification Notes

When specifying, state the following:

Application: Incorporate Fletcher Insulation *Deckmate 300* Thermal Insulation Spacer over Fletcher Insulation Building Blanket along the purlin line to achieve recovered thickness of the insulation blanket.

Product name: Fletcher Insulation *Deckmate 300* Thermal Insulation Spacer Thickness required



Freecall SALES **1300 65 44 44** Technical Services **1800 000 878**
Email **info@insulation.com.au** Web **www.insulation.com.au**

Fletcher[™]
Insulation

NOTE: Fletcher Insulation Pty. Limited. reserves the right to change product specifications without prior notification. Information in this Publication and otherwise supplied to users as to the subject product is based on our general experience and is given in good faith, but Because of the many particular factors which are outside our knowledge and control and affect the use of products, no warranty is given Or is to be implied with respect to either such information or the product itself, in particular the suitability of the product for any particular purpose. The purchaser should independently determine the suitability of the product for the intended application.

Fletcher Insulation Pty. Limited. ABN 72 001 175 355. [™]Trademarks of Fletcher Insulation. [™]FBS-1 Bio-Soluble Glass Wool is a trademark used under license by Fletcher Insulation. © Copyright 2010.