

Thermatape

Thermatape™
bridges the gap



Fletcher™
Insulation



The quick, easy *solution*

Fletcher Insulation™ Thermatape™ is a simple, easy to use and cost effective solution to resolving issues regarding thermal bridging on metal frame construction.

The Building Code of Australia (BCA) now contains a requirement for a thermal break to be installed where materials such as weatherboard, fibre cement sheeting or metal cladding are fixed directly to the steel frame to reduce the effects of thermal bridging.

Manufactured from premium quality high density polyethylene foam with a self adhesive backing, Thermatape™ is easily adhered to steel frames prior to the installation of cladding.

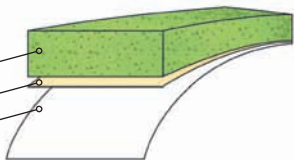
Having been specially developed for this application, Thermatape™ meets the BCA thermal break requirement of R0.2

Thermatape™ allows you to install tried and proven glasswool batts in the same way as with timber framing.

The distinctive Fletcher Insulation™ green colouring of Thermatape™ makes it easy to identify from inferior competitor products.

THERMATAPE™ 3D CROSS - SECTION

- 10mm thick high density polyethylene foam
- High tack self adhesive backing
- Easy peel off backing paper

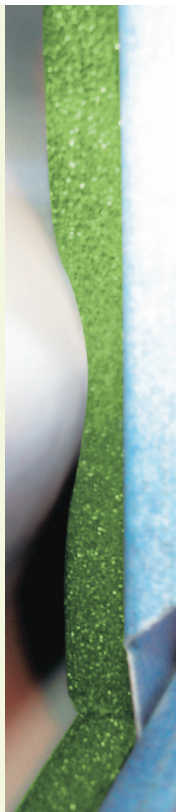


on to thermal bridging

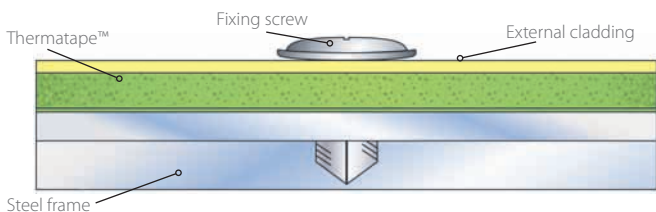
Stop heat leakage

Thermatape™ works by creating a thermal break between the steel frame and the outer cladding material. The high density polyethylene foam prevents direct contact between the steel frame and the cladding at the fixing point, thereby, ensuring that the overall thermal performance of the insulation system is not adversely affected by thermal bridging.

Fletcher Insulation™ Thermatape™ is also very quick and easy to install. Simply peel off the backing paper and apply to the steel frame before fixing the cladding.



INSTALLATION CROSS - SECTION



Building Code of Australia (BCA)

BCA requirements

Thermal bridging is the term given to heat leakage via a conductive path. Metal framed structures are particularly susceptible to thermal bridging due to their high conductive properties. The thermal performance of wall and roofing systems is compromised due to thermal bridging when a metal frame member connects the outer cladding or roofing with the inner lining.

Under the BCA (2007) Section 3.12.1.4 a thermal break is needed when a metal framing member directly connects the external cladding to the internal lining or the internal environment. The purpose of the thermal break is to ensure that the thermal performance of the metal framed wall is comparable to that of a similarly clad timber framed wall.

Product Details

Product Code	EAN (Barcode)	Dimensions	R-Value Uncompressed	R-Value Compressed
318004	9312669180049	10mm thick x 30mm wide x 10m long	R0.3	R0.2

For more information call

1300 65 44 44

or visit **www.insulation.com.au**

Fletcher Insulation 161 Arthur St, Homebush, NSW 2140
P (02) 9752 9200 F (02) 9752 9200 E info@insulation.com.au

Fletcher[™]
Insulation



FI_0083_001110